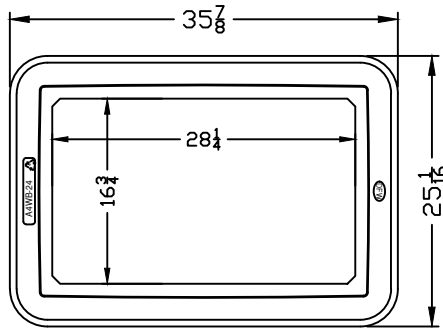
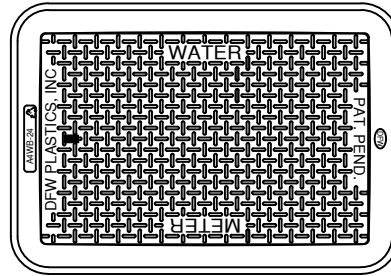


DFWA4C-1-LID

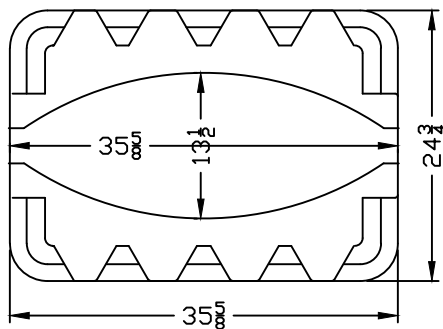
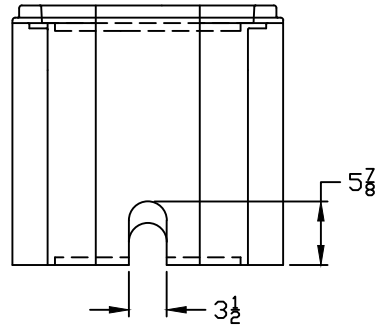
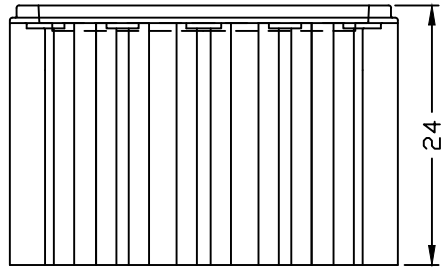
LID KEY	
1	BLACK COLOR



DFWA4WBC-24-BODY



DFWA4WBC-24-1



BOTTOM VIEW

NOTES

- 1) DIM'S ± 1/8" U.N.O.
- 2) LID MATERIAL: HDPE
- 3) BODY MATERIAL: LLDPE
- 4) WALL THICKNESS: 1/2" MINIMUM
- 5) I.W.A. = INSIDE WORK AREA

DFW PLASTICS, INC. ENGAGES IN ONGOING RESEARCH AND DEVELOPMENT TO IMPROVE AND ENHANCE ITS PRODUCTS. THEREFORE, DFW PLASTICS, INC. RESERVES THE RIGHT TO CHANGE PRODUCT OR SYSTEM SPECIFICATIONS WITHOUT NOTICE.



DFW PLASTICS, INC.
PO BOX 648
BEDFORD, TEXAS 76095
(817) 439-3600
(817) 439-3700 (f)
www.dfwplasticsinc.com

DFWA4WBC-24-1

CREATED: 05/02/2019

UPDATED: 05/02/2019

ACCEPTED: JMc

DRAWN BY: RMc

PLOT SCALE: 1:16