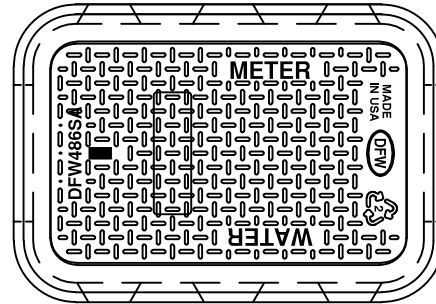
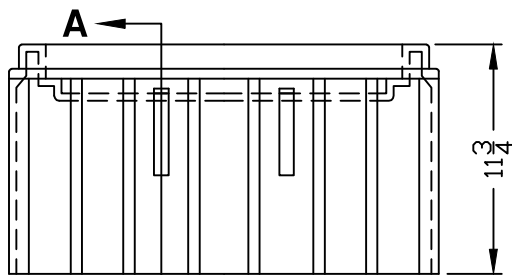
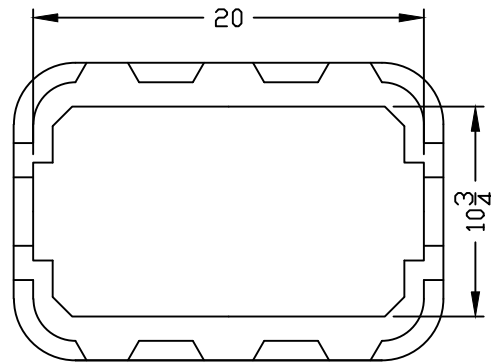
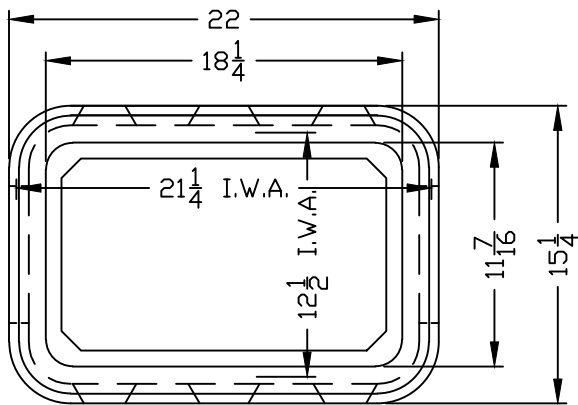


DFW486SA-1-LID

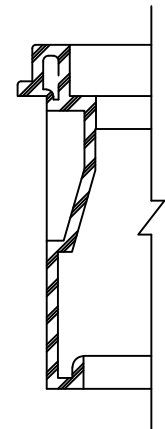
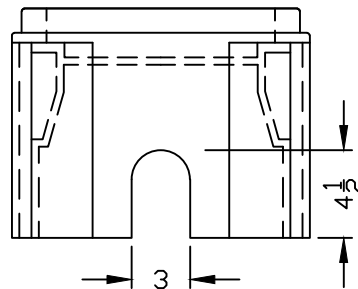
LID KEY	
1	BLACK COLOR



DFW486WBC-12-1



DFW486WBC-12-BODY



**KISS OFF DETAIL
SECTION A-A**

NOTES

- 1) DIM'S ± 1/8" U.N.O.
- 2) BODY MATERIAL: LLDPE
- 3) WALL THICKNESS: 3/8" ± 5%
- 4) I.W.A. = INSIDE WORK AREA

DFW PLASTICS, INC. ENGAGES IN ONGOING RESEARCH AND DEVELOPMENT TO IMPROVE AND ENHANCE ITS PRODUCTS. THEREFORE, DFW PLASTICS, INC. RESERVES THE RIGHT TO CHANGE PRODUCT OR SYSTEM SPECIFICATIONS WITHOUT NOTICE.



DFW PLASTICS, INC.
PO BOX 648
BEDFORD, TEXAS 76095
(817) 439-3600
(817) 439-3700 (f)
www.dfwplasticsinc.com

DFW486WBC-12-1

CREATED: 12/07/2016
UPDATED: 12/07/2016
ACCEPTED: JMc
DRAWN BY: RMc
PLOT SCALE: 1:10