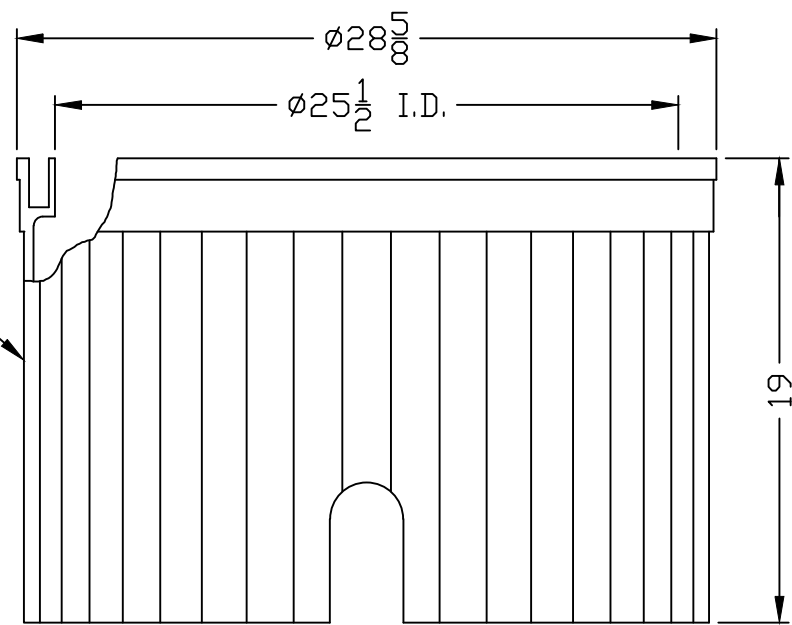
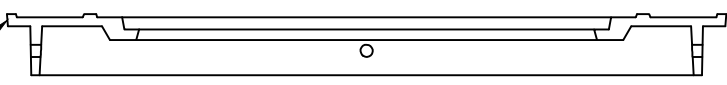


IMPORT CAST  
IRON RING  
DFW-28G



DFW-2818F

**NOTES**

- 1) DIM'S ± 1/8" U.N.O.
- 2) BODY MATERIAL: LLDPE
- 3) WALL THICKNESS: 3/8" MINIMUM

DFW PLASTICS, INC. ENGAGES IN ONGOING RESEARCH AND DEVELOPMENT TO IMPROVE AND ENHANCE ITS PRODUCTS. THEREFORE, DFW PLASTICS, INC. RESERVES THE RIGHT TO CHANGE PRODUCT OR SYSTEM SPECIFICATIONS WITHOUT NOTICE.



DFW PLASTICS, INC.  
PO BOX 648  
BEDFORD, TEXAS 76095  
(817) 439-3600  
(817) 439-3700 (f)  
www.dfwplasticsinc.com

DFW2818FR

CREATED: 05/24/2010
UPDATED: 03/28/2014
ACCEPTED: JMc
DRAWN BY: RMc
PLOT SCALE: 1:6