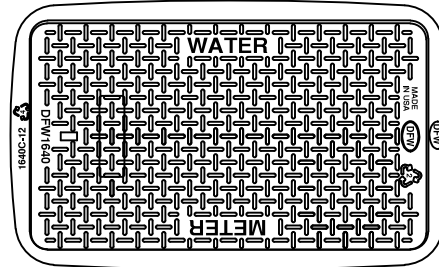
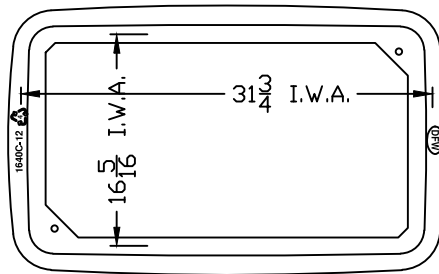


LID KEY	
1	BLACK COLOR

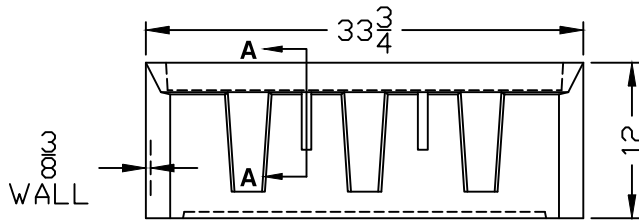


KISS OFF DETAIL
SECTION A-A

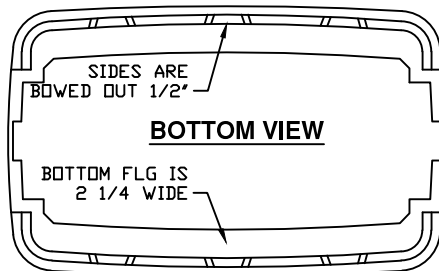
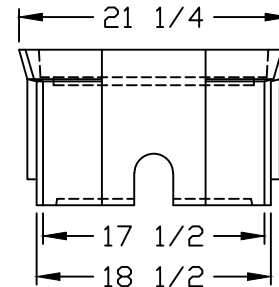
DFW1640C-4F-LID



DFW1640C-12-1



DFW1640C-12-BODY



- NOTES**
- 1) DIM'S ± 1/8 U.N.O.
 - 2) LID MATERIAL: H.D.P.E.
 - 3) BODY MATERIAL: L.L.P.E.
 - 4) WALL THICKNESS: 3/8 ± 5%
 - 5) I.W.A. = INSIDE WORK AREA.

DFW PLASTICS, INC. ENGAGES IN ONGOING RESEARCH AND DEVELOPMENT TO IMPROVE AND ENHANCE ITS PRODUCTS. THEREFORE, DFW PLASTICS, INC RESERVES THE RIGHT TO CHANGE PRODUCT OR SYSTEM SPECIFICATIONS WITHOUT NOTICE.



DFW PLASTICS, INC.
PO BOX 648
BEDFORD, TEXAS 76095
(817) 439-3600
(817) 439-3700 (f)
www.dfwplasticsinc.com

DFW1640C-12-1

CREATED:	03/31/2014
UPDATED:	03/31/2014
ACCEPTED:	JMc
DRAWN BY:	RMc
PLOT SCALE:	1:14