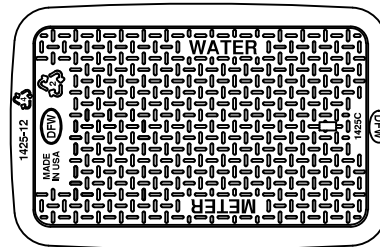
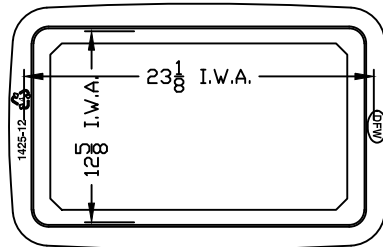


DFW1425C-1-LID

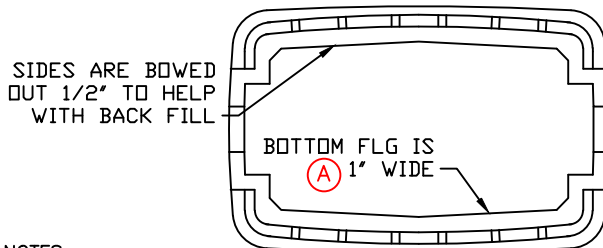
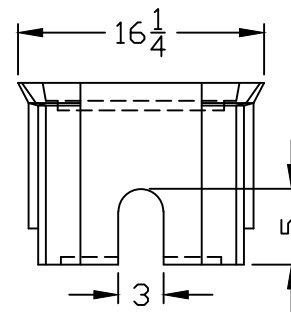
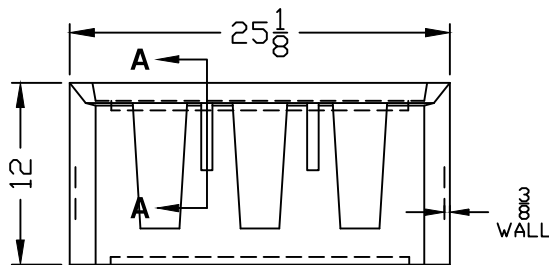
LID KEY	
1	BLACK COLOR



SECTION A-A



DFW1425C-12-1



DFW1425C-12-BODY

DFW PLASTICS, INC. ENGAGES IN ONGOING RESEARCH AND DEVELOPMENT TO IMPROVE AND ENHANCE ITS PRODUCTS. THEREFORE, DFW PLASTICS, INC. RESERVES THE RIGHT TO CHANGE PRODUCT OR SYSTEM SPECIFICATIONS WITHOUT NOTICE.

- NOTES**
- 1) DIM'S ± 1/8 U.N.O.
 - 2) LID MATERIAL: H.D.P.E.
 - 3) BODY MATERIAL: L.L.P.E.
 - 4) WALL THICKNESS: 3/8 ± 5%
 - 5) I.W.A. = INSIDE WORK AREA



DFW PLASTICS, INC.
PO BOX 648
BEDFORD, TEXAS 76095
(817) 439-3600
(817) 439-3700 (f)
www.dfwplasticsinc.com

DFW1425C-12-1

CREATED:	03/31/2014
UPDATED:	03/31/2014
ACCEPTED:	JMc
DRAWN BY:	RMc
PLOT SCALE:	1:12